

Scaled data based on original data using
LM-79-08 Approved Method: Electrical and Photometric Measurements of Solid-
State Lighting Products

Test Report Prepared for
Cooper Lighting Solutions
(formerly Eaton)

Brand: INVUE

Report Number: P150493

Luminaire Tested: **VWM-F01-LED-E1-SL3-HSS-8030**

Issue Date: 03/03/2020

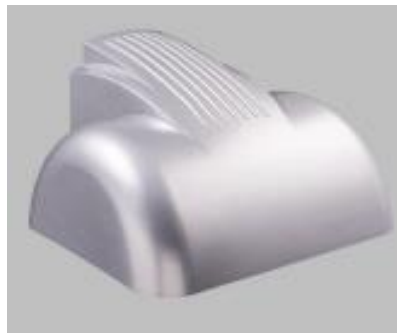
Test Information

Test Method: LM-79-08
Report Number: P150493
REPORT IS SCALED FROM IESNA LM-79-08 TEST DATA (P33727)
Test Lab: INNOVATION CENTER-P3
Issue Date: 03/03/2020
Manufacturer: COOPER LIGHTING SOLUTIONS (FORMERLY EATON)
Product Line: INVUE
Catalog Number: VWM-F01-LED-E1-SL3-HSS-8030
Description: VISION WALL MEDIUM LED LUMINAIRE
(1) LIGHTBARS WITH AccuLED OPTICS - TYPE 3 W/ SPILL LIGHT CONTROL AND HOUSE SIDE SHIELD
Light Source: (7) 3000K CCT, 80 CRI LEDs
Ballast/Driver: -

Summary

Lumens per Lamp: N/A
Luminaire Lumens: 1208 lumens
Efficiency: N/A
Efficacy: 46.6 lumens/watt
Luminous Opening: Rectangular (W 0.17' x L: 1' x H: 0')
IES Classification: Type III - Short - Non-Cutoff
BUG Rating: B0 - U0 - G1

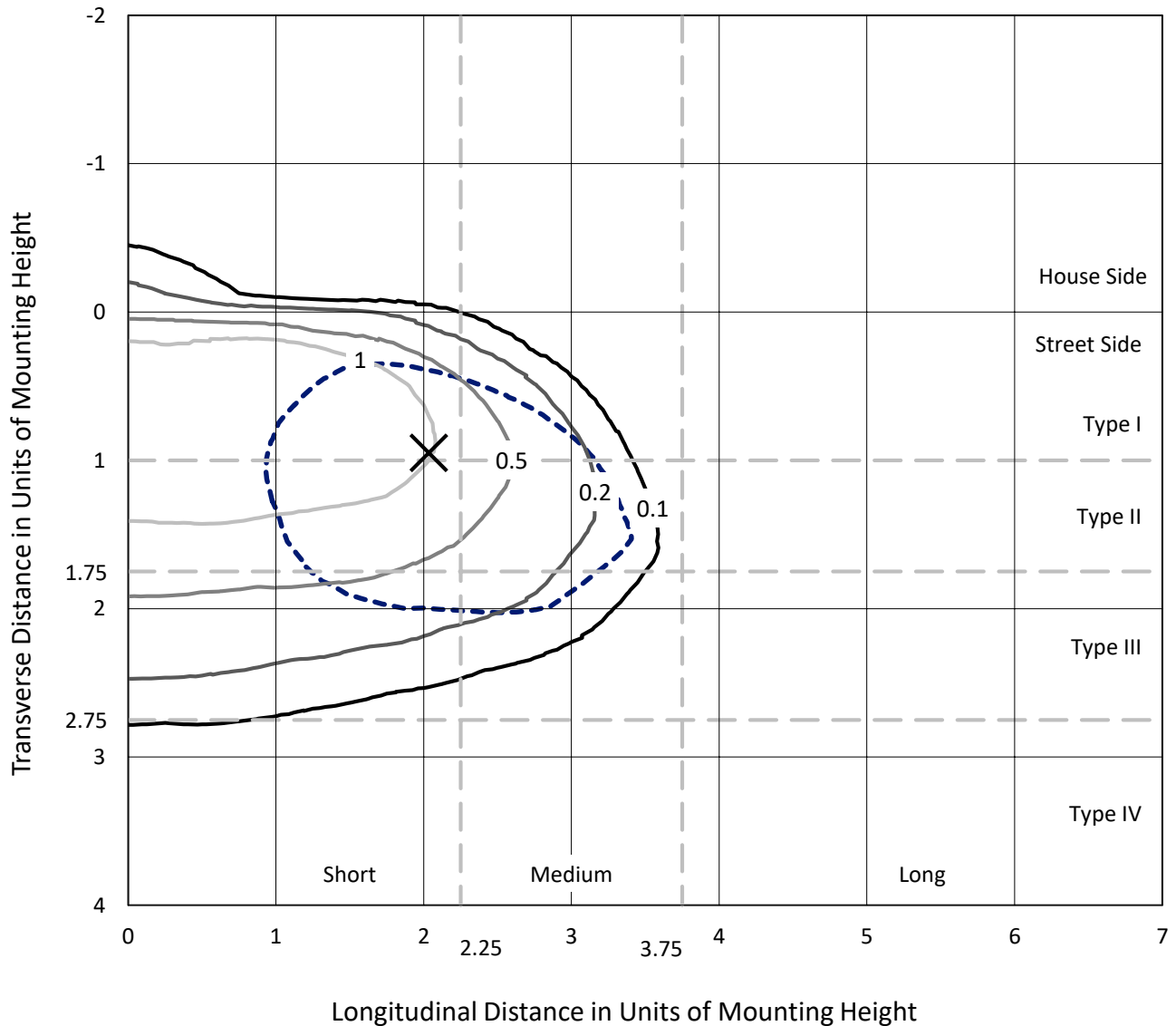
Input Watts (W): 25.9
Input Voltage (V): NR
Input Current (Ain): NR
Voltage Rise (V): NR
Power Factor: NR
Total Harmonic Distortion (THDi): NR
Frequency (hertz): 60
Stabilization Time: NR
Operation Time: NR
Ambient Temperature (°C): NR
Test Distance: 25 FT



REPORT NUMBER: P150493
 CATALOG NUMBER: VWM-F01-LED-E1-SL3-HSS-8030

Iso-Footcandle Lines of Horizontal Illumination

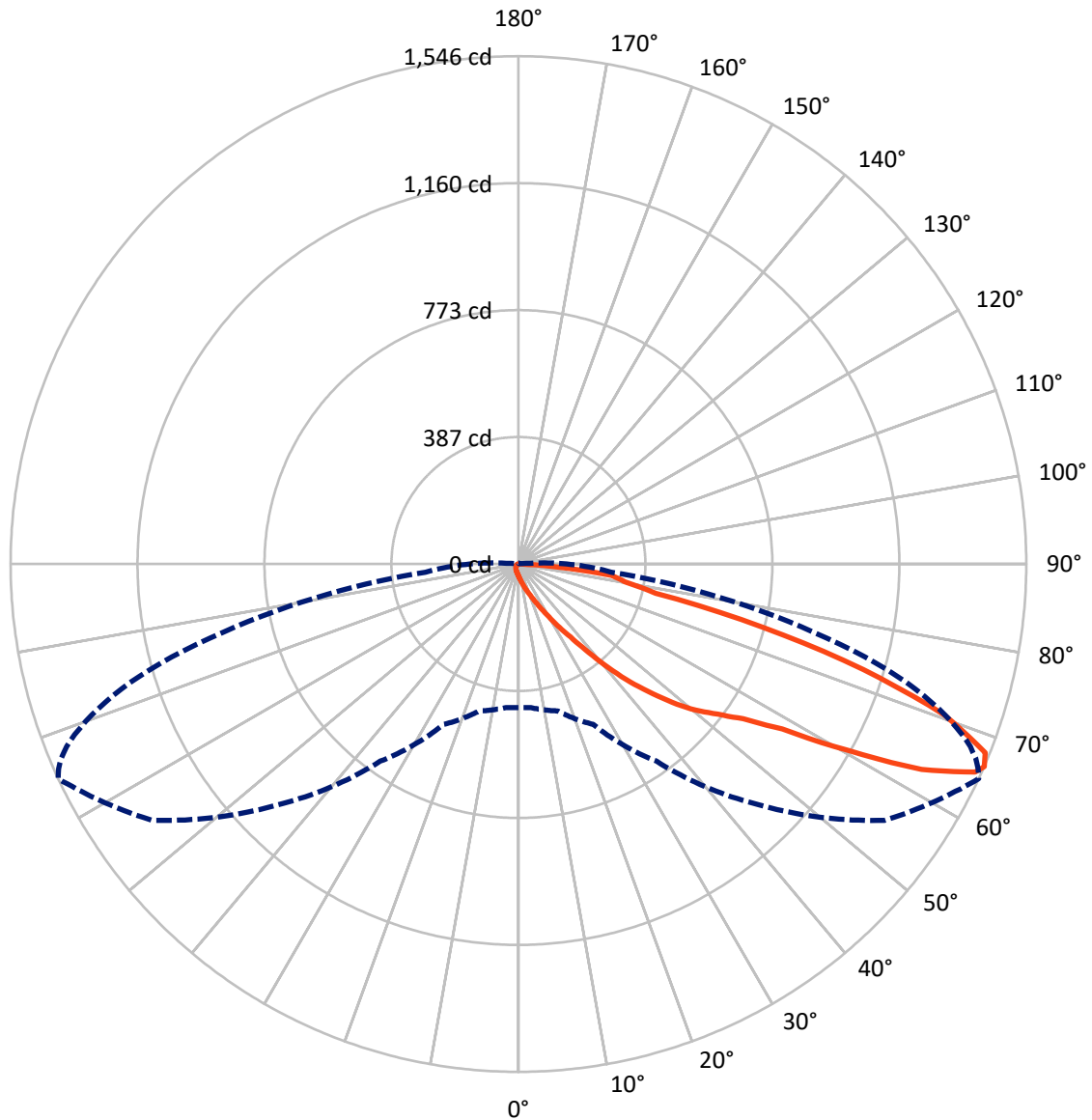
× Max cd
 - - - 1/2 Max cd



Based on 10 foot mounting height. Maximum calculated value = 2 fc
 Type III - Short - Non-Cutoff

REPORT NUMBER: P150493
CATALOG NUMBER: VWM-F01-LED-E1-SL3-HSS-8030

Luminous Intensity Polar Plot



— Vertical Plane Through 65-Deg Lateral - - - Horizontal Cone Through 66-Deg Vertical

REPORT NUMBER: P150493

CATALOG NUMBER: VWM-F01-LED-E1-SL3-HSS-8030

FLUX DISTRIBUTION:

		Downward	Upward	Total
House Side	Lumens	26.2	0.0	26.2
	% Fixture	2.2	0.0	2.2
Street Side	Lumens	1181.8	0.0	1181.8
	% Fixture	97.8	0.0	97.8
Total	Lumens	1208.0	0.0	1208.0
	% Fixture	100.0	0.0	100.0

Coefficient of Utilization

ZONAL LUMENS:

Zone	Lumens	% Fixture
0°-10°	4.1	0.3
10°-20°	17.3	1.4
20°-30°	37.3	3.1
30°-40°	79.7	6.6
40°-50°	176.3	14.6
50°-60°	298.8	24.7
60°-70°	398.7	33.0
70°-80°	175.6	14.5
80°-90°	20.2	1.7
90°-100°	0.0	0.0
100°-110°	0.0	0.0
110°-120°	0.0	0.0
120°-130°	0.0	0.0
130°-140°	0.0	0.0
140°-150°	0.0	0.0
150°-160°	0.0	0.0
160°-170°	0.0	0.0
170°-180°	0.0	0.0
0°-90°	1208.0	100.0
0°-180°	1208.0	100.0



REPORT NUMBER: P150493

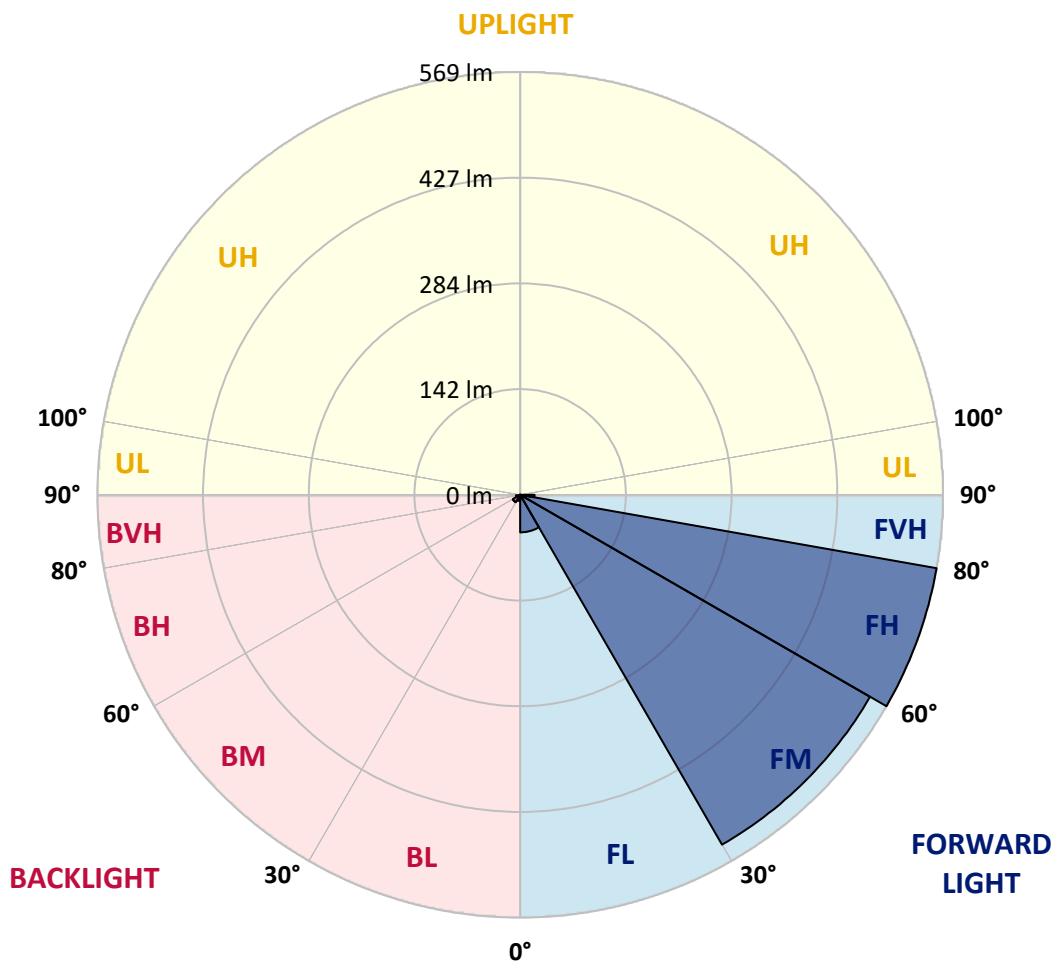
CATALOG NUMBER: VWM-F01-LED-E1-SL3-HSS-8030

LUMINAIRE CLASSIFICATION SYSTEM LUMEN TABLE AND BUG RATING:

Zone		Lumens	% Fixture	Zone Rating/Lumen Limit		
				B	U	G
FL	(0°-30°)	50.5	4.2			
FM	(30°-60°)	543.3	45.0			
FH	(60°-80°)	568.7	47.1			G0/660
FVH	(80°-90°)	19.4	1.6			G1/100
BL	(0°-30°)	8.3	0.7	B0/110		
BM	(30°-60°)	11.5	1.0	B0/220		
BH	(60°-80°)	5.6	0.5	B0/110		G0/110
BVH	(80°-90°)	0.8	0.1			G0/10
UL	(90°-100°)	0.0	0.0		U0/0	
UH	(100°-180°)	0.0	0.0		U0/0	

BUG Rating: B0-U0-G1

Type III Short





REPORT NUMBER: P150493
 CATALOG NUMBER: VWM-F01-LED-E1-SL3-HSS-8030

CANDELA DISTRIBUTION (FULL):

	0°	5°	15°	25°	35°	45°	55°	65°	66°	67°	68°
0°	36.5	36.5	36.5	36.5	36.5	36.5	36.5	36.5	36.5	36.5	36.5
2.5°	46.0	45.8	44.8	44.8	43.4	42.5	41.3	40.2	40.2	39.9	39.7
5°	60.8	59.5	59.2	56.7	54.6	51.6	48.8	45.1	44.6	44.1	43.9
7.5°	77.3	77.1	75.0	72.0	67.8	62.2	56.7	50.6	49.7	49.2	48.3
10°	98.7	97.5	94.8	89.6	83.4	75.9	66.9	57.4	56.2	55.3	54.8
12.5°	119.1	117.1	115.4	108.9	101.0	90.1	79.2	65.5	64.6	63.4	61.5
15°	138.2	136.3	133.5	128.0	119.1	105.4	92.7	75.9	73.6	72.0	70.6
17.5°	153.0	151.9	148.6	142.4	132.8	120.8	105.4	86.6	84.8	82.7	80.1
20°	167.2	165.6	160.5	151.9	141.7	132.4	120.5	100.6	98.0	95.5	92.7
22.5°	180.7	179.1	170.7	156.5	145.6	141.7	137.5	116.4	112.4	110.3	107.5
25°	199.5	196.0	183.0	160.5	145.8	148.9	156.1	136.8	133.1	130.1	125.6
27.5°	224.8	220.2	199.7	166.3	146.8	156.8	177.4	161.6	157.7	154.2	149.3
30°	253.4	250.4	226.0	180.2	153.5	168.4	201.4	193.2	188.6	184.4	178.6
32.5°	282.2	278.0	253.8	206.7	171.6	190.9	231.3	229.9	223.9	219.9	213.7
35°	307.5	305.4	287.5	250.1	213.0	230.4	271.3	272.9	267.5	263.4	256.4
37.5°	324.7	324.7	321.2	296.8	278.7	291.7	330.0	330.3	324.9	315.4	311.9
40°	333.5	336.1	348.6	353.2	352.3	369.0	407.1	402.9	398.5	393.7	382.0
42.5°	351.6	353.9	380.6	412.7	433.6	455.7	481.9	480.5	475.2	466.3	455.7
45°	382.3	385.3	417.1	468.0	510.9	542.3	559.0	552.5	547.2	538.8	533.2
47.5°	421.3	427.1	463.1	526.0	577.8	629.6	647.0	629.8	625.2	618.7	609.6
50°	462.9	468.4	506.8	578.8	637.3	699.1	728.1	699.1	692.3	690.2	680.0
52.5°	498.9	503.5	540.4	619.4	682.8	755.3	797.5	759.2	754.3	747.4	739.9
55°	520.2	523.9	558.5	638.9	713.7	805.9	864.6	831.0	823.8	821.0	810.3
57.5°	527.4	531.1	562.3	641.5	730.4	852.1	946.2	947.3	938.7	928.7	925.5
60°	527.4	531.6	557.9	635.2	746.7	901.3	1054.9	1151.7	1133.1	1131.3	1119.4
62.5°	505.6	509.5	536.0	615.9	768.5	967.8	1206.3	1377.2	1371.9	1359.8	1340.3
65°	458.2	460.5	486.6	566.7	760.1	1028.8	1337.5	1527.2	1518.7	1495.0	1469.9
66°	436.9	438.7	463.1	538.6	732.7	1037.2	1360.7	1546.1	1531.9	1511.9	1483.6
67.5°	406.0	409.2	426.4	486.3	667.0	1008.2	1346.1	1532.8	1520.5	1496.4	1468.0
70°	271.0	268.7	329.3	373.2	508.2	821.5	1207.7	1376.3	1376.5	1365.1	1353.8
72.5°	128.7	130.1	147.7	229.7	332.6	548.8	961.3	1098.5	1114.3	1093.9	1079.7
75°	92.4	94.5	105.2	140.5	198.3	329.3	623.1	768.3	768.7	732.5	700.2
77.5°	26.9	28.1	39.5	86.6	148.6	222.3	357.9	427.1	417.1	391.1	366.7
80°	11.1	11.1	11.6	27.6	59.7	151.0	250.4	328.9	327.7	317.7	303.3
82.5°	4.2	4.4	5.6	11.4	14.2	37.2	167.0	285.4	284.7	270.6	260.3
85°	0.5	0.5	1.4	4.9	5.3	7.0	33.4	125.9	125.2	125.9	110.3
87.5°	0.0	0.0	0.2	0.5	0.7	0.9	1.4	4.9	5.3	5.1	4.6
90°	0.0	0.0	0.0	0.0	0.0	0.0	0.0	0.0	0.0	0.0	0.0



REPORT NUMBER: P150493
 CATALOG NUMBER: VWM-F01-LED-E1-SL3-HSS-8030

CANDELA DISTRIBUTION (continued):

	69°	70°	71°	72°	73°	74°	75°	76°	77°	78°	79°
0°	36.5	36.5	36.5	36.5	36.5	36.5	36.5	36.5	36.5	36.5	36.5
2.5°	39.7	39.2	39.2	39.0	39.0	39.0	38.8	38.6	38.6	38.3	38.1
5°	43.4	43.0	42.7	42.3	42.0	41.8	41.3	41.1	40.6	40.4	40.2
7.5°	47.8	46.9	46.7	46.0	45.3	44.8	44.4	43.7	43.2	42.3	42.0
10°	53.4	52.3	51.3	50.4	49.7	48.5	47.8	46.9	46.0	45.3	44.6
12.5°	60.6	59.0	57.6	56.7	55.0	53.6	52.3	51.6	49.7	48.8	47.6
15°	68.5	66.7	65.0	63.2	62.0	59.7	57.8	55.7	54.8	53.2	51.3
17.5°	78.7	75.7	73.2	71.3	69.0	66.7	64.6	62.5	59.7	57.8	55.5
20°	89.6	87.1	83.6	80.4	77.6	74.8	71.8	69.0	66.4	63.4	60.6
22.5°	103.6	99.9	95.7	92.4	88.7	85.7	81.5	77.8	73.6	69.7	66.4
25°	121.2	116.4	112.4	107.8	103.3	98.7	93.6	88.9	83.6	79.9	74.3
27.5°	143.1	138.4	133.1	127.0	122.6	115.7	108.9	103.1	96.8	91.0	84.8
30°	170.9	164.2	158.6	152.8	144.0	137.3	129.4	121.5	112.9	107.1	97.5
32.5°	204.4	197.2	188.8	180.5	172.3	162.8	153.0	143.3	133.8	123.1	113.3
35°	245.3	236.7	227.1	218.1	205.5	195.3	183.0	169.5	158.9	146.5	134.2
37.5°	299.4	285.2	276.8	267.3	250.4	236.4	222.7	209.3	190.4	177.4	160.0
40°	367.2	358.8	345.1	329.8	314.5	296.1	277.5	259.7	237.8	219.7	199.5
42.5°	446.8	434.5	420.6	398.5	383.0	361.4	340.2	316.6	289.8	266.6	242.9
45°	521.6	507.0	496.3	474.2	458.0	432.4	406.9	381.8	350.9	321.0	293.6
47.5°	602.4	590.4	572.7	554.8	538.3	509.5	481.9	451.5	419.0	383.4	347.9
50°	673.5	664.0	651.9	630.3	612.0	587.8	555.3	522.1	481.0	445.7	405.3
52.5°	733.9	726.5	709.5	694.2	677.7	654.9	625.9	594.1	549.7	510.9	465.0
55°	805.2	799.9	785.0	775.5	760.8	739.0	711.8	682.3	635.4	593.2	541.1
57.5°	922.0	917.8	904.8	900.9	886.5	867.4	834.0	802.4	747.6	695.1	635.7
60°	1115.5	1107.1	1088.1	1078.3	1047.9	1022.3	978.9	935.5	869.3	802.4	730.9
62.5°	1322.6	1299.2	1262.9	1231.8	1188.6	1144.3	1086.2	1019.8	942.2	862.8	780.6
65°	1434.3	1394.4	1348.6	1299.2	1243.2	1177.9	1104.8	1025.1	941.8	857.9	771.1
66°	1447.1	1402.1	1353.5	1298.5	1236.2	1166.8	1092.5	1008.9	922.2	840.5	753.6
67.5°	1431.1	1383.9	1332.6	1271.5	1204.2	1132.2	1054.2	967.3	883.9	801.0	716.5
70°	1318.9	1272.0	1226.3	1161.9	1090.2	1017.7	943.8	846.8	767.8	691.6	616.4
72.5°	1053.2	1021.4	976.1	921.1	851.2	766.2	704.6	617.8	549.3	475.4	417.1
75°	658.2	613.4	557.4	487.3	433.8	364.9	328.9	262.9	223.9	189.7	156.8
77.5°	336.5	302.8	263.6	224.1	186.3	148.6	115.0	81.3	54.8	38.1	28.3
80°	278.0	248.3	215.8	179.8	146.3	113.6	81.8	55.7	35.5	23.2	18.1
82.5°	229.7	204.6	175.6	142.1	113.1	89.2	62.0	40.4	25.1	16.3	12.8
85°	97.8	88.7	68.5	54.3	40.9	30.2	21.1	14.2	10.0	8.1	7.4
87.5°	4.2	4.6	4.4	3.5	2.6	2.6	2.3	1.9	1.9	1.9	1.9
90°	0.0	0.0	0.0	0.0	0.0	0.0	0.0	0.0	0.0	0.0	0.0



REPORT NUMBER: P150493

CATALOG NUMBER: VWM-F01-LED-E1-SL3-HSS-8030

CANDELA DISTRIBUTION (continued):

	80°	81°	82°	83°	84°	85°	95°	105°	115°	125°	135°
0°	36.5	36.5	36.5	36.5	36.5	36.5	36.5	36.5	36.5	36.5	36.5
2.5°	38.1	37.9	37.6	37.6	37.4	37.2	35.8	34.6	33.2	32.3	31.4
5°	39.7	39.5	39.0	38.8	38.3	38.1	35.1	32.5	30.4	28.8	27.6
7.5°	41.3	41.1	40.4	39.7	39.5	39.0	34.1	30.9	28.1	26.2	25.1
10°	43.4	42.7	42.0	41.1	40.4	39.7	33.2	29.0	26.0	24.4	23.2
12.5°	46.4	45.3	44.1	43.0	42.0	40.9	32.7	27.4	24.4	22.5	21.4
15°	49.9	48.3	46.9	45.5	43.9	42.7	31.8	26.0	23.0	21.1	19.7
17.5°	53.2	51.3	49.2	47.1	45.5	43.9	30.9	24.6	21.6	19.7	18.3
20°	57.8	55.0	52.5	49.9	47.6	45.5	29.5	23.2	20.4	18.3	17.0
22.5°	62.9	59.7	56.4	53.0	49.9	47.1	28.3	22.1	19.3	17.2	15.6
25°	69.4	65.5	61.1	56.7	53.2	49.5	27.2	20.9	18.1	16.0	14.4
27.5°	78.5	72.9	68.0	62.5	57.1	53.0	26.2	20.0	17.0	14.9	13.2
30°	90.8	82.7	75.0	69.0	62.7	56.7	25.3	18.8	16.0	13.7	11.8
32.5°	104.5	95.0	86.2	77.1	69.2	62.2	24.4	17.9	14.9	12.5	10.9
35°	121.5	109.4	97.5	87.1	77.6	68.3	23.5	17.0	13.9	11.4	9.8
37.5°	145.8	130.8	115.2	101.7	89.4	77.1	22.8	16.0	12.8	10.2	8.6
40°	179.3	159.8	140.7	122.4	106.4	91.0	21.8	15.1	11.8	9.3	7.7
42.5°	215.5	191.8	166.8	146.1	124.0	104.7	20.9	14.2	10.9	8.4	6.7
45°	260.6	231.1	200.7	172.6	145.6	120.8	20.0	13.2	9.8	7.4	5.8
47.5°	309.8	272.2	237.8	202.5	170.5	140.7	18.8	12.5	8.8	6.5	5.1
50°	360.4	320.7	277.3	237.1	199.0	160.7	17.7	11.4	7.9	5.8	4.2
52.5°	415.0	368.1	323.7	273.8	229.5	187.0	16.5	10.5	7.2	5.1	3.5
55°	484.5	432.0	380.0	324.0	270.6	217.4	15.3	9.3	6.3	4.4	2.8
57.5°	571.8	509.5	445.7	382.5	317.7	257.3	14.4	8.1	5.3	3.7	2.3
60°	654.2	581.5	504.2	431.5	358.4	288.0	13.0	7.2	4.6	3.0	2.3
62.5°	697.0	614.1	530.7	450.6	372.5	298.9	11.6	6.0	3.9	2.6	2.1
65°	686.5	602.0	521.2	440.3	363.9	291.9	10.2	5.3	3.5	2.3	2.1
66°	671.4	587.8	506.5	429.7	356.7	284.5	9.5	5.1	3.3	2.3	1.9
67.5°	638.4	557.6	480.1	408.5	337.0	270.3	8.6	4.6	3.0	2.1	1.9
70°	545.3	471.9	409.9	346.3	288.0	227.8	7.0	3.9	2.6	1.9	1.9
72.5°	360.9	311.0	269.6	232.0	193.9	150.5	5.8	3.3	2.1	1.9	1.6
75°	136.1	123.1	105.7	95.0	82.9	72.7	4.6	2.1	1.6	1.6	1.6
77.5°	24.2	22.3	19.7	18.1	16.7	15.3	3.7	1.4	1.4	1.6	1.6
80°	16.3	15.1	13.7	12.5	11.6	10.5	2.6	1.2	1.4	1.4	1.6
82.5°	11.6	10.9	10.2	9.3	8.6	7.7	1.6	1.2	1.4	1.4	1.4
85°	7.0	6.5	6.0	5.6	4.9	4.6	1.2	1.2	1.2	1.4	1.4
87.5°	1.9	1.6	1.9	1.9	1.4	1.6	0.9	0.9	0.9	1.2	1.2
90°	0.0	0.0	0.0	0.0	0.0	0.0	0.0	0.0	0.0	0.0	0.0



REPORT NUMBER: P150493
 CATALOG NUMBER: VWM-F01-LED-E1-SL3-HSS-8030

CANDELA DISTRIBUTION (continued):

	145°	155°	165°	175°	180°
0°	36.5	36.5	36.5	36.5	36.5
2.5°	30.9	30.9	30.4	31.1	31.1
5°	26.7	26.7	26.5	26.7	26.7
7.5°	24.4	24.2	24.2	24.2	24.4
10°	22.3	22.1	22.1	22.1	22.1
12.5°	20.4	20.2	20.0	20.2	20.2
15°	18.8	18.3	18.3	18.3	18.3
17.5°	17.4	17.0	16.7	16.7	16.7
20°	16.0	15.3	15.3	15.3	15.3
22.5°	14.6	13.9	13.9	13.9	13.9
25°	13.2	12.5	12.5	12.5	12.5
27.5°	12.1	11.4	11.4	11.4	11.4
30°	10.7	10.2	10.2	10.5	10.2
32.5°	9.8	9.1	9.1	9.3	9.3
35°	8.6	8.1	8.1	8.1	8.1
37.5°	7.4	7.0	7.0	7.0	7.0
40°	6.5	6.0	5.8	6.0	6.0
42.5°	5.6	5.1	4.9	4.9	4.9
45°	4.9	4.2	3.9	4.2	4.2
47.5°	3.9	3.5	3.5	3.7	3.7
50°	3.0	3.0	3.3	3.7	3.7
52.5°	2.8	2.8	3.3	3.7	3.7
55°	2.6	2.8	3.3	3.5	3.7
57.5°	2.3	2.8	3.3	3.5	3.5
60°	2.3	2.6	3.0	3.5	3.5
62.5°	2.1	2.3	2.8	3.3	3.3
65°	2.1	2.3	2.8	3.3	3.3
66°	2.1	2.3	2.8	3.3	3.3
67.5°	2.1	2.3	2.8	3.3	3.3
70°	2.1	2.3	2.8	3.0	3.0
72.5°	1.9	2.1	2.6	3.0	3.0
75°	1.9	2.1	2.6	3.0	3.0
77.5°	1.9	2.1	2.6	3.0	3.0
80°	1.9	2.1	2.6	2.8	3.0
82.5°	1.6	2.1	2.3	2.8	2.8
85°	1.6	1.9	2.3	2.6	2.8
87.5°	1.4	1.6	1.9	2.3	2.3
90°	0.0	0.0	0.0	0.0	0.0

(END OF REPORT)